

## NISSAN INTELLIGENT MOBILITY™

Nissan Intelligent Mobility guides everything we do. We're using new technologies to transform cars from mere driving machines into assistants. Together the journey is more confident, connected, and exciting. Whether it's cars that assist in the driving task, or highways that charge your EV as you go along, it's all in the very near future. And it's a future already taking shape in the Nissan you drive today.



Innovation  
that excites

2019  
**MURANO®**

### SEE MURANO® COME TO LIFE

Go to [NissanUSA.com](http://NissanUSA.com) and find an interactive brochure for Murano and every Nissan in the lineup. Available on desktop, smartphone, or tablet, it's the full product story - including demos, videos, and complete info on trims, colors, and accessories.



<sup>1</sup>Availability of features vary by vehicle model year, model, trim level, packaging, and options. <sup>2</sup>Driving is serious business and requires your full attention. If you have to use the connected device while driving, exercise extreme caution at all times so full attention may be given to vehicle operation. <sup>3</sup>Never program while driving. GPS mapping may not be detailed in all areas or reflect current road status. <sup>4</sup>Available services/features may be shown. Compatible connected device may be required. Only use services/features and device when safe and legal to do so. Subject to GPS and wireless network availability and connection, and system/technology limitations. Text rates/data usage/subscription may apply. Some services/features provided by companies not within Nissan or its partners' or agents' control and may be discontinued at any time. For more information, see dealer, Owner's Manual, or [NissanUSA.com/connect/important-information](http://NissanUSA.com/connect/important-information). <sup>5</sup>Blind Spot Warning cannot prevent collisions and may not detect every object or warn in all situations. Driver should always turn and look before changing lanes. See Owner's Manual for safety information. <sup>6</sup>Use Hands Free Text Messaging when parked in a safe location. If you must use while driving, monitor traffic conditions and keep both hands on the steering wheel to prevent collisions. Compatible device required. Message and data rates may apply. <sup>7</sup>ProPILOT Assist cannot prevent collisions. It is the driver's responsibility to be in control of the vehicle at all times. Always monitor traffic conditions and keep both hands on the steering wheel. System operates only when lane markings are detected. Does not function in all weather, traffic, and road conditions. System has limited control capability and the driver may need to steer, brake, or accelerate at any time to maintain safety. See Owner's Manual for safety information. <sup>8</sup>Intelligent Forward Collision Warning cannot prevent collisions. See Owner's Manual for safety information. <sup>9</sup>Automatic Emergency Braking and Automatic Emergency Braking with Pedestrian Detection cannot prevent all collisions and may not provide warning or braking in all conditions. Driver should monitor traffic conditions and brake as needed to prevent collisions. See Owner's Manual for safety information. <sup>10</sup>Rear Cross Traffic Alert may not detect all vehicles. See Owner's Manual for safety information. <sup>11</sup>Intelligent Lane Intervention only operates when lane markings are detectable. See Owner's Manual for safety information. <sup>12</sup>Rear Automatic Braking cannot prevent all collisions and may not provide warning or braking in all conditions. Driver should monitor traffic conditions and brake as needed to prevent collisions. See Owner's Manual for safety information. <sup>13</sup>Cargo shown for display purposes only. Cargo and load capacity limited by weight and distribution. Always secure cargo. Heavy loading of the vehicle with cargo, especially on the roof, will affect the handling and stability of the vehicle. <sup>14</sup>Intelligent Around View® Monitor cannot eliminate blind spots and may not detect every object. Driver should always turn and check surroundings before driving. See Owner's Manual for safety information. <sup>15</sup>Virtual composite 360° view. <sup>16</sup>Extra cost option. <sup>17</sup>Limited availability. <sup>18</sup>Driving is serious business and requires your full attention. If you have to use the feature while driving, exercise extreme caution at all times so full attention may be given to vehicle operation. <sup>19</sup>Information displayed is dependent on how vehicle is equipped. <sup>20</sup>RearView Monitor may not detect every object and does not eliminate blind spots or warn of moving objects. See Owner's Manual for safety information. <sup>21</sup>Intelligent Driver Alertness cannot provide a warning in every situation. See Owner's Manual for safety information. <sup>22</sup>Air bags are only a supplemental restraint system. Always wear your seat belt. Rear-facing child restraints should not be placed in the front-passenger's seat. All children 12 and under should ride in the rear seat properly secured in child restraints, booster seats, or seat belts according to their size. Air bags will only inflate in certain accidents. See Owner's Manual for safety information. <sup>23</sup>See Owner's Manual for safety information. <sup>24</sup>State laws may apply. Review before using. <sup>25</sup>Intelligent Cruise Control uses limited braking and is not a collision avoidance or warning system. Driver should monitor traffic conditions and brake as needed to prevent collisions. See Owner's Manual for safety information. <sup>26</sup>Genuine Nissan Accessories are covered by Nissan's Limited Warranty on Genuine Nissan Replacement Parts, Genuine NISMO® S-Tune Parts, and Genuine Nissan Accessories for the longer of 12 months/12,000 miles (whichever occurs first) or the remaining period under the 3-year/36,000-mile (whichever occurs first) Nissan New Vehicle Limited Warranty. Terms and conditions apply. See dealer, Warranty Information Booklet, or [parts.NissanUSA.com](http://parts.NissanUSA.com) for details. <sup>27</sup>Towing capability varies by configuration. See Nissan Towing Guide and Owner's Manual for additional information. <sup>28</sup>Brake Assist cannot prevent all collisions and may not provide warning or braking in all conditions. Driver should monitor traffic conditions and brake as needed to prevent collisions. See Owner's Manual for safety information. <sup>29</sup>Vehicle Dynamic Control cannot prevent collisions due to abrupt steering, carelessness, or dangerous driving techniques. It should remain on when driving, except when freeing the vehicle from mud or snow. See Owner's Manual for safety information. <sup>30</sup>Tire Pressure Monitoring System is not a substitute for regular tire pressure checks. See Owner's Manual for safety information. <sup>31</sup>Vehicle must be on for the Easy-Fill Tire Alert to operate. <sup>32</sup>2019 EPA Fuel Economy Estimate 20/28/23 City/Highway/Combined. Actual mileage may vary with driving conditions. Use for comparison only. <sup>33</sup>For a period of 36 months/36,000 miles from the date the vehicle is delivered to the first retail buyer or otherwise put into use, whichever is earlier. Android® and Android Auto™ are trademarks of Google LLC. Apple CarPlay® is a registered trademark of Apple, Inc. Bluetooth® word mark and logos are owned by Bluetooth SIG, Inc., and any use of such marks by Nissan is under license. Bose® is a registered trademark of The Bose Corporation. ChromaFlair® is a registered trademark of Optical Coating Laboratory, LLC. Facebook® is a registered trademark of Facebook, Inc. Google Assistant and Google Play™ are trademarks of Google LLC. HD Radio® is a registered trademark of iBiquity Digital Corporation. HomeLink® is a registered trademark of Gentex Corporation. Pandora® is a registered trademark of Pandora Media. Siri® and Siri® Eyes Free are registered trademarks of Apple, Inc. The Sirius®, XM®, and SiriusXM® names and all related marks and logos are trademarks of Sirius XM Radio Inc. Twitter® is a registered trademark of Twitter, Inc. YouTube® is a registered trademark of Google LLC. This brochure is intended for general descriptive and informational purposes only. It is subject to change and does not constitute an offer, representation or warranty (express or implied) by Nissan North America, Inc. Interested parties should confirm the accuracy of any information in this brochure as it relates to a vehicle directly with Nissan North America, Inc., before relying on it to make a purchase decision. Nissan North America, Inc., reserves the right to make changes, at any time, without prior notice, in prices, colors, materials, equipment, specifications, and models and to discontinue models or equipment. Due to continuous product development and other pre- and post-production factors, actual vehicle, materials and specifications may vary from this brochure. Some vehicles shown with optional equipment. See the actual vehicle for complete accuracy. Availability and delivery times for particular models or equipment may vary. Specifications, options and accessories may differ in Hawaii, U.S. territories and other countries. For additional information on availability, options or accessories, see your Nissan dealer or contact Nissan North America, Inc. At [NissanUSA.com](http://NissanUSA.com), you'll find virtual product demonstrations, a way to "build your own Nissan," a dealer locator, and more information about key Nissan support services. Or if you'd prefer, call **1-800-NISSAN-3** for answers to specific questions about Murano® or any other Nissan vehicle. The Nissan names, logos, product names, feature names, and slogans are trademarks owned by or licensed to Nissan Motor Co. Ltd. and/or its North American subsidiaries. Other trademarks and trade names are those of their respective owners. **Always wear your seat belt, and please drive responsibly.** ©2018 Nissan North America, Inc. <sup>19</sup>Murano®. 1922602-N-12/18-60M-CGI



Take in a daring new look for the classic premium crossover. An upgraded interior with new accents and soft-touch surfaces surround you in style and comfort, while seamless connectivity keeps your wider world within reach. And with available Nissan Intelligent Mobility technologies that see and sense more,<sup>1</sup> you'll enjoy your night out with confidence. The new 2019 Nissan Murano.<sup>®</sup> Tech that moves you.







**PREMIUM FEATURES EVERYWHERE YOU LOOK**

Available Heated Front and Rear Seats

Available Semi-aniline Leather Appointments

Available Dark Wood Finishes

Front and Rear USB-C Ports<sup>2</sup>

Nissan Murano® Platinum AWD shown in Cashmere Semi-aniline Leather.

**PREMIUM GETS AN UPGRADE**

Available dark wood finishes and semi-aniline leather-appointed seats add an upgraded look and feel to Murano's already premium interior. Things continue to look up with the available Power Panoramic Moonroof that lets in natural light and provides an impressively large view above. And with front and rear USB-C ports, everyone can enjoy faster charging than ever.<sup>2</sup>



## NISSAN INTELLIGENT MOBILITY

Nissan Intelligent Mobility changes how you move, forever. You'll drive with greater awareness and can even get an assist when you need it most. From finding your way to choosing your soundtrack, Nissan Intelligent Mobility makes it easier – it's technology that makes you feel more confident, connected, and excited.<sup>1, 3, 4</sup>



## 360 DEGREES OF CONFIDENCE

Imagine being surrounded by confidence on every drive. Nissan Intelligent Mobility includes available features that monitor in front of you, behind you, and on either side, and can step in to help keep you out of trouble.<sup>1</sup>

### AUTOMATIC EMERGENCY BRAKING WITH PEDESTRIAN DETECTION

Murano® monitors the speed and distance between you and the car ahead, and can let you know if you need to slow down. It can even automatically engage the brakes to help avoid a frontal collision or lessen the severity of an impact. And with available Automatic Emergency Braking with Pedestrian Detection, when it detects a pedestrian in the crosswalk, it can stop you in your tracks.<sup>7, 8, 9</sup>

### HIGH BEAM ASSIST

Available High Beam Assist helps out with night vision, while being considerate of your fellow drivers. It automatically switches to low beam headlights when it detects a vehicle ahead, and turns the high beams back on when you need them.

### INTELLIGENT LANE INTERVENTION

Available Intelligent Lane Intervention helps keep you in your lane. When lane markings are clear, it can detect if you're straying out of your lane and can tap the brakes to help gently guide you back.<sup>11</sup>

### BLIND SPOT WARNING

Murano helps you change lanes with confidence. Available Blind Spot Warning keeps an eye on the blind spot area and gives you a heads-up if it detects a vehicle hiding there.<sup>5</sup>

### REAR CROSS TRAFFIC ALERT

Available Rear Cross Traffic Alert helps you back out of your space. It watches around the rear of your Murano, and can warn you about cars it detects creeping up on you from either side.<sup>10</sup>

### REAR AUTOMATIC BRAKING

Murano monitors the area directly behind your vehicle for stationary items you might not see. If it detects an item, and you fail to stop, this available system can automatically engage the brakes to help avoid a rear collision or lessen the severity of an impact.<sup>12</sup>

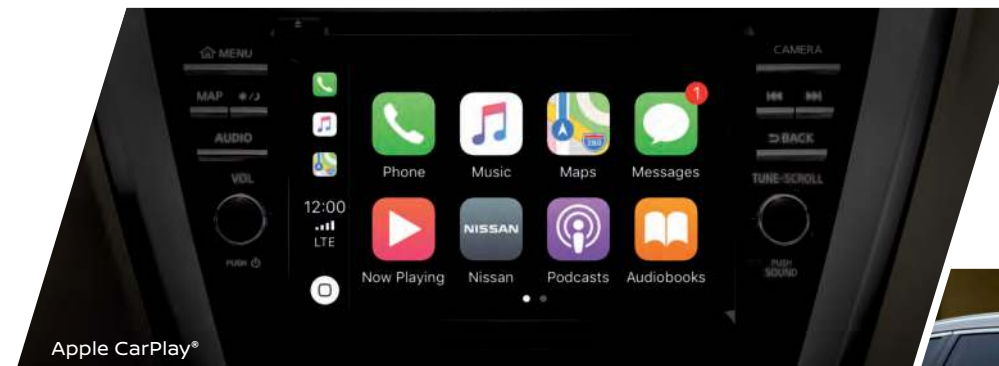
Blind Spot Warning shown<sup>5</sup>

## SMARTPHONE CONNECTIVITY

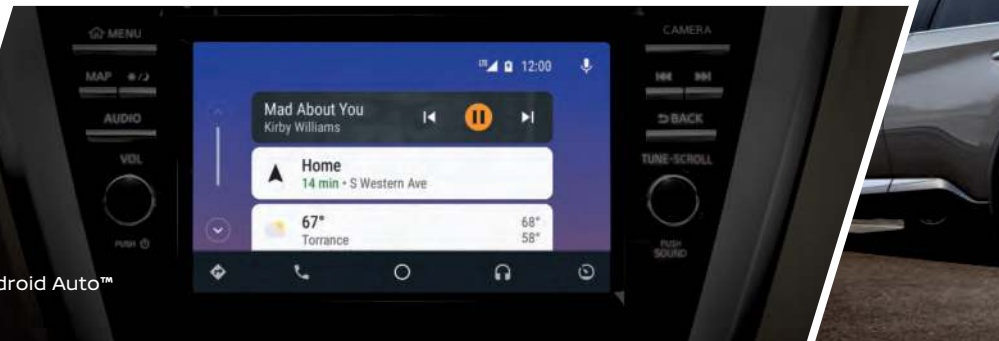
Access the things you want to do on your phone, directly on Murano's 8" touch-screen display. Just plug in a compatible smartphone and you'll stay connected.<sup>4</sup>

People to see? Places to be? Just ask Siri.® Equipped with Siri® voice control, standard Apple CarPlay® compatibility brings on board your contacts, favorite messaging apps, and more. Simply plug in your compatible iPhone® and go.<sup>4, 6</sup>

With standard Android Auto™ compatibility, you can play your music, set your destination, or respond to a text hands-free using the hundreds of available voice commands with your Google Assistant.<sup>4, 6</sup>



Apple CarPlay®



Android Auto™

## MOTION ACTIVATED LIFTGATE

Hands full? Just kick under the rear bumper to open the available Motion Activated Liftgate, without reaching for a key or juggling whatever you're carrying.<sup>13</sup>

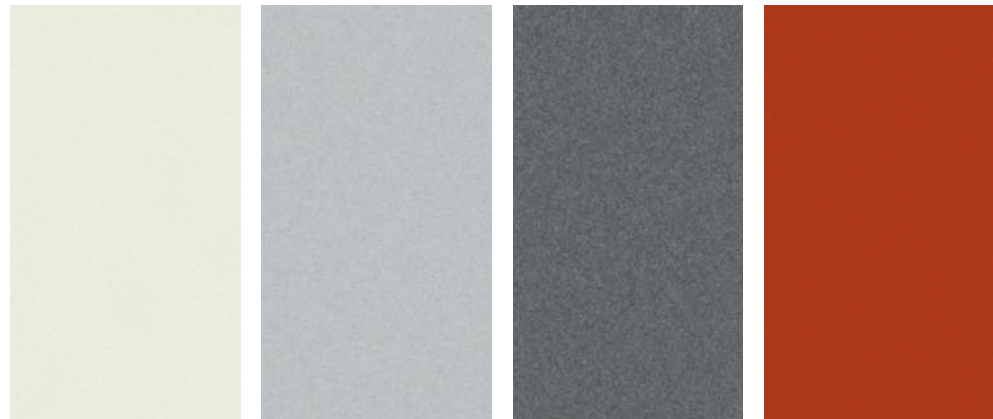


## INTELLIGENT AROUND VIEW® MONITOR

Available Intelligent Around View Monitor uses four cameras to give you a virtual composite 360° bird's-eye view of your vehicle, with selectable split-screen close-ups of the front, rear, and curbside views, so you can get a better look. And when it detects moving objects around your vehicle, it can give you an on-screen heads-up.<sup>14, 15</sup>



## CHOOSE YOUR COLOR



Pearl White TriCoat<sup>16</sup> Brilliant Silver Metallic Gun Metallic Sunset Drift ChromaFlair<sup>16,17</sup>

	S	SV	SL	PLT	S	SV	SL	PLT	S	SV	SL	PLT	S	SV	SL	PLT
GRAPHITE CLOTH	■	■			■	■			■	■			■	■		
CASHMERE CLOTH		■														
GRAPHITE LEATHER			■				■				■				■	
CASHMERE LEATHER			■													
MOCHA SEMI-ANILINE LEATHER				■								■				
GRAPHITE SEMI-ANILINE LEATHER				■				■				■				■
CASHMERE SEMI-ANILINE LEATHER				■												■



Cayenne Red Metallic Deep Blue Pearl Mocha Almond Pearl Magnetic Black Pearl

	S	SV	SL	PLT	S	SV	SL	PLT	S	SV	SL	PLT	S	SV	SL	PLT
GRAPHITE CLOTH	■	■			■	■			■	■			■	■		
CASHMERE CLOTH		■				■										
GRAPHITE LEATHER			■				■				■				■	
CASHMERE LEATHER			■				■					■			■	
MOCHA SEMI-ANILINE LEATHER				■				■								■
GRAPHITE SEMI-ANILINE LEATHER				■				■				■				■
CASHMERE SEMI-ANILINE LEATHER				■				■				■				■

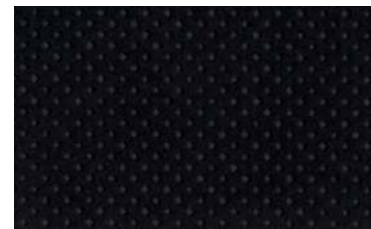
■ Standard

Nissan has taken care to ensure that the color swatches presented here are the closest possible representations of actual vehicle colors. Swatches may vary slightly due to the printing process and whether viewed in daylight, fluorescent or incandescent light. Please see the actual colors at your dealer.

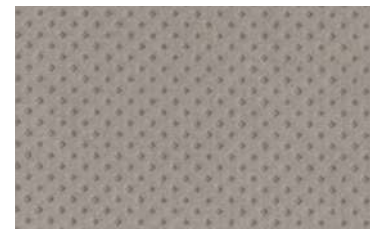
## CHOOSE YOUR INTERIOR



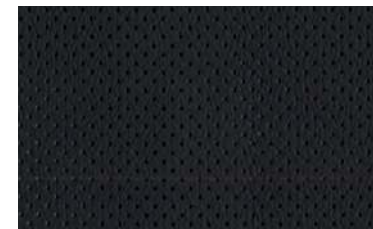
Nissan Murano<sup>®</sup> Platinum AWD shown in Cashmere Semi-aniline Leather.



Graphite Cloth S|SV



Cashmere Cloth SV



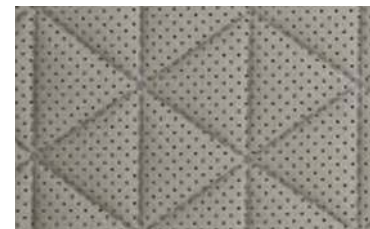
Graphite Leather SL



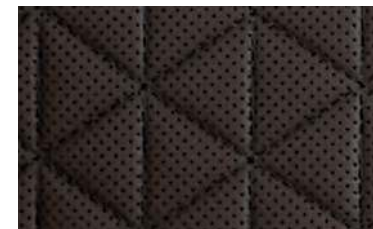
Cashmere Leather SL



Graphite Semi-aniline Leather Platinum



Cashmere Semi-aniline Leather Platinum



Mocha Semi-aniline Leather Platinum



## CHOOSE YOUR TRIM LEVEL

**S**

- 260-hp, 3.5-liter V6 engine
- Xtronic CVT® (Continuos Variable Transmission)
- Front-Wheel Drive
- Intelligent Forward Collision Warning<sup>8</sup>
- Automatic Emergency Braking<sup>9</sup>
- 18" Machine-finished aluminum-alloy wheels
- Automatic on/off headlights
- LED headlights with LED Signature Daytime Running lights
- LED taillights
- Dual Zone Automatic Temperature Control with in-cabin microfilter
- Nissan Intelligent Key® with Push Button Ignition
- 6-way manual driver's seat
- Cloth seat trim
- Advanced Drive-Assist® Display<sup>18, 19</sup>
- Three 12-volt DC power outlets<sup>2</sup>
- Apple CarPlay™<sup>4</sup>
- Android Auto™<sup>4</sup>
- NissanConnect® 8" touch-screen display
- Voice recognition for audio and navigation<sup>3</sup>
- Hands-free Text Messaging Assistant<sup>6</sup>
- Bluetooth® Hands-free Phone System and streaming audio<sup>4</sup>
- RearView Monitor<sup>20</sup>
- Auxilliary audio input jack<sup>2</sup>
- Two USB ports and two USB-C ports<sup>2</sup>
- SiriusXM® Radio with 3-month complimentary trial access<sup>4</sup>
- Intelligent Driver Alertness<sup>21</sup>
- Nissan Advanced Air Bag System<sup>22</sup>
- Rear Door Alert<sup>23</sup>



**PLATINUM**

INCLUDES SL EQUIPMENT PLUS:

- Distinctive 20" dark hyper silver aluminum-alloy wheels
- Power Panoramic Moonroof with one-touch open/close
- Climate-controlled front seats (heated and cooled)
- Semi-aniline leather-appointed seats with diamond-quilted inserts
- Contrast micro-piping for seat, door, and console inserts
- Power-tilt and power-telescoping steering column with memory position
- Automatic Emergency Braking with Pedestrian Detection<sup>9</sup>
- Intelligent Lane Intervention<sup>11</sup>
- High Beam Assist
- Traffic Sign Recognition
- Rear Automatic Braking<sup>12</sup>
- NissanConnect services powered by SiriusXM with complimentary trial access to 3-year Select and 6-month Premium Plus packages<sup>4</sup>



**SV**

INCLUDES S EQUIPMENT PLUS:

- Black roof rails<sup>13</sup>
- Remote Engine Start System with Intelligent Climate Control<sup>24</sup>
- 10-way power driver's seat, including 2-way power lumbar support
- 4-way power front-passenger's seat
- Leather-wrapped steering wheel and shift knob
- Auto-dimming rearview mirror
- HomeLink® Universal Transceiver
- Blind Spot Warning<sup>5</sup>
- Rear Cross Traffic Alert<sup>10</sup>

### AVAILABLE PACKAGE:

- Premium Package



## CHOOSE YOUR PACKAGE

**PREMIUM PACKAGE**

SV

- Intelligent Around View® Monitor<sup>14</sup>
- Front and rear parking sensors
- LED fog lights
- Intelligent Cruise Control<sup>25</sup>
- Power Panoramic Moonroof with one-touch open/close
- Bose® Premium Audio System with 11 speakers, including dual subwoofers
- Heated front seats
- Power heated outside mirrors with LED turn signal indicators
- Cloth-wrapped A-pillar



**SL**

INCLUDES SV EQUIPMENT PLUS:

- 20" Machine-finished aluminum alloy wheels
- Silver roof rails<sup>13</sup>
- LED fog lights
- Power heated outside mirrors with LED turn signal indicators and reverse tilt-down feature
- Motion Activated Liftgate<sup>13</sup>
- Driver's seat and outside mirrors position memory
- Leather-appointed seats
- Heated front and rear seats
- Heated steering wheel
- Adjustable ambient LED interior lighting
- Bose® Premium Audio System With 11 Speakers, Including Dual Subwoofers
- Nissan Door to Door Navigation with Premium Traffic<sup>3</sup>
- Intelligent Around View® Monitor<sup>14</sup>
- Intelligent Cruise Control<sup>25</sup>
- Front and rear parking sensors
- SiriusXM® Traffic and Travel Link<sup>4</sup>

### AVAILABLE PACKAGE:

- Technology Package



**TECHNOLOGY PACKAGE**

SL

- Automatic Emergency Braking with Pedestrian Detection<sup>9</sup>
- Intelligent Lane Intervention<sup>11</sup>
- High Beam Assist
- Traffic Sign Recognition
- Power Panoramic Moonroof with one-touch open/close
- Rear Automatic Braking<sup>12</sup>



## CHOOSE YOUR ACCESSORIES



Every Genuine Nissan Accessory is custom-fit, custom-designed and durability-tested. Each one is backed by Nissan's 3-year/36,000-mile (whichever occurs first) limited warranty (if installed by dealer at the time of purchase), and can be financed when installed by dealer at time of purchase.<sup>26</sup>

**A. Rear Cargo Cover and Carpeted Cargo Mat<sup>13</sup>**  
Keep it covered and keep it protected. (Sold separately)

**B. Illuminated Kick Plates and Interior Accent Lighting**  
For a grand entrance every time. (Sold separately)

**C. Wireless Smartphone Charger<sup>2</sup>**  
Stay fully charged without ever plugging in.

**D. Impact Sensor**  
Keep your Murano<sup>®</sup> alarmed, so you don't have to be.

**E. Frameless Auto-dimming Rearview Mirror with Universal Remote**  
This is one eye-opening feature.

**F. Stainless Steel Sport Pedals**  
Step up your style.

**G. All-season Floor Mats**  
Neither rain, sleet or snow will muck up your Murano.<sup>®</sup>

**H. All-season Cargo Area Protector**  
Preserve and protect your cargo – and your Murano.

### Additional Accessories:

- Carpeted Floor Mats
- Remote Engine Start System<sup>24</sup>
- Portable Cargo Organizer
- Cargo Net
- Hatch Tent
- Nissan WiFi<sup>4</sup>
- Wheel Locks
- Clear Rear Bumper Protector
- And More

## GENUINE NISSAN ACCESSORIES

# EMBRACE THE ART OF ACCESSORIZING

For more information and to shop online for Murano<sup>®</sup> Genuine Nissan Accessories, go to [bit.ly/19murano-estore](https://bit.ly/19murano-estore)



To see Genuine Nissan Accessories in action, go to [bit.ly/19murano\\_gnavideos](https://bit.ly/19murano_gnavideos)

Nissan Murano<sup>®</sup> Platinum AWD shown in Magnetic Black Pearl with 20" Satin Black Aluminum-alloy Wheels, External Ground Lighting, Roof Rail Crossbars,<sup>13</sup> Satin Chrome Rear Bumper Protector, Satin Chrome Rear Underbody Trim, Splash Guards, Tow Hitch Receiver,<sup>27</sup> Hitch Ball Mount,<sup>27</sup> and Hitch Ball.<sup>27</sup>



## SPECIFICATIONS

Engine	S	SV	SL	PLAT
3.5-liter DOHC 24-valve V6 engine	■	■	■	■
— Horsepower – 260 hp @ 6,000 rpm				
— Torque – 240 lb-ft @ 4,400 rpm				
Continuously Variable Valve Timing Control System (CVTCS) on intake valves	■	■	■	■
Variable induction system	■	■	■	■
Nissan Direct Ignition System	■	■	■	■
Double-tipped iridium spark plugs	■	■	■	■
Electronic drive-by-wire throttle	■	■	■	■

Drivetrain	S	SV	SL	PLAT
Front-Wheel Drive (FWD)	■	■	■	■
Intelligent All-Wheel Drive (AWD)	□	□	□	□
Hill start assist	■	■	■	■
Xtronic CVT® (Continuously Variable Transmission)	■	■	■	■

Brakes	S	SV	SL	PLAT
4-wheel vented disc brakes	■	■	■	■
4-wheel Anti-Lock Braking System (ABS) – G-sensor on AWD models	■	■	■	■
Electronic Brake force Distribution (EBD)	■	■	■	■
Brake Assist <sup>28</sup>	■	■	■	■

Suspension/Chassis Bracing/Steering	S	SV	SL	PLAT
Independent strut front suspension	■	■	■	■
Multi-link independent rear suspension	■	■	■	■
Front and rear stabilizer bars	■	■	■	■
Vehicle-speed-sensitive power steering	■	■	■	■

Wheels/Tires	S	SV	SL	PLAT
18" x 7.5" Machine-finished aluminum-alloy wheels	■	■		
20" x 7.5" Machine-finished aluminum-alloy wheels			■	
Distinctive 20" x 7.5 dark hyper silver aluminum-alloy wheels				■
P235/65R18 all-season tires	■	■		
P235/55R20 all-season tires			■	■

Exterior Features	S	SV	SL	PLAT
LED headlights with LED Signature Daytime Running Lights	■	■	■	■
Automatic on/off headlights	■	■	■	■
LED fog lights		P	■	■
LED taillights	■	■	■	■
Black roof rails <sup>13</sup>		■		
Silver roof rails <sup>13</sup>			■	■
Power Panoramic Moonroof with one-touch open/close		P	T	■
Chrome door handles	■	■	■	■
Power outside mirrors with LED turn signal indicators	■	■		
Power heated outside mirrors with LED turn signal indicators		P		
Power heated outside mirrors with LED turn signal indicators and reverse tilt-down feature			■	■
Active Grille Shutters	■	■	■	■

Comfort/Convenience	S	SV	SL	PLAT
Motion Activated Liftgate <sup>15</sup>			■	■
Advanced Drive-Assist® Display <sup>18,19</sup>	■	■	■	■
Nissan Door to Door Navigation with Premium Traffic <sup>3</sup>			■	■
NissanConnect® Services powered by SiriusXM <sup>4</sup>				■
NissanConnect services powered by SiriusXM with complimentary trial access to 3-year Select and 6-month Premium Plus packages <sup>4</sup>				■
NissanConnect 8" touch-screen display	■	■	■	■
Nissan Voice Recognition for audio and navigation <sup>2</sup>	■	■	■	■
Apple CarPlay <sup>4</sup>	■	■	■	■
Android Auto™ <sup>4</sup>			■	■
SiriusXM® Traffic and Travel Link® with 3-month complimentary trial access <sup>4</sup>			■	■
Bluetooth® Hands-free Phone System <sup>4</sup>	■	■	■	■
RearView Monitor <sup>20</sup>	■	■		
Intelligent Around View® Monitor <sup>14</sup>		P	■	■
Front and rear parking sensors		P	■	■
Rear Door Alert <sup>23</sup>	■	■		
High Beam Assist			T	■
Traffic Sign Recognition			T	■
Dual Zone Automatic Temperature Control with in-cabin microfilter	■	■	■	■
Rear passenger air conditioning vents	■	■	■	■
HomeLink® Universal Transceiver			■	■
Driver's seat and outside mirrors position memory				■
Steering-wheel position memory				■
Steering wheel-mounted cruise control	■	■	■	■
Intelligent Cruise Control <sup>25</sup>		P	■	■
Intelligent Driver Alertness <sup>21</sup>	■	■	■	■
Nissan Intelligent Key® with Push Button Ignition	■	■	■	■
Remote Engine Start System with Intelligent Climate Control <sup>24</sup>		■	■	■
Remote front windows down	■	■	■	■
Tilt and telescoping steering column	■	■	■	■
Power-tilt and power-telescoping steering column				■
Variable intermittent windshield wipers	■			
Vehicle speed-sensing variable intermittent windshield wipers		■	■	■
Intermittent rear window wiper	■	■	■	■
Auto-dimming rearview mirror		■	■	■
Three 12-volt DC power outlets <sup>2</sup>	■	■	■	■
Adjustable ambient interior lighting			■	■
Eight cargo area tie-down hooks and rings <sup>15</sup>	■	■	■	■

Seating/Appointments	S	SV	SL	PLAT
6-way manual driver's seat	■			
10-way power driver's seat, including 2-way power lumbar support		■	■	■
4-way manual front-passenger's seat	■			
4-way power front-passenger's seat		■	■	■
Heated front seats		P	■	
Climate-controlled front seats (heated and cooled)				■
Heated rear seats			■	■
60/40 Split fold-down rear seatbacks with cargo area-accessible levers	■	■	■	■

Seating/Appointments (continued)	S	SV	SL	PLAT
Reclining rear seatbacks with center armrest	■	■	■	■
Cloth seat trim	■	■		
Cloth-wrapped A-pillar		P		
Leather-appointed seats			■	
Semi-aniline leather-appointed seats with diamond-quilted inserts				■
Leather-wrapped steering wheel and shift knob		■	■	■
Heated steering wheel			■	■

Audio/Entertainment	S	SV	SL	PLAT
AM/FM/CD audio system with six speakers	■	■		
Bose® Premium Audio System with 11 speakers, including dual subwoofers		P	■	■
MP3/WMA CD playback capability	■	■	■	■
Auxiliary audio input jack <sup>2</sup>	■	■	■	■
Two USB ports and two USB-C ports <sup>2</sup>	■	■	■	■
SiriusXM® Radio with 3-month complimentary trial access <sup>4</sup>	■	■	■	■
HD Radio®	■	■	■	■
Streaming audio via Bluetooth® wireless technology <sup>4</sup>	■	■	■	■
Steering wheel-mounted audio controls	■	■	■	■

Safety/Security	S	SV	SL	PLAT
Nissan Advanced Air Bag System with dual-stage supplemental front air bags with seat-belt and occupant-classification sensors <sup>22</sup>	■	■	■	■
Seat-mounted side-impact supplemental air bags for front- and rear-seat outboard occupants <sup>22</sup>	■	■	■	■
Roof-mounted curtain supplemental air bags with rollover sensor for side-impact and rollover head protection for front and rear-seat outboard occupants <sup>22</sup>	■	■	■	■
Driver and front passenger supplemental knee air bag <sup>22</sup>	■	■	■	■
Vehicle Dynamic Control (VDC) <sup>29</sup> with Traction Control System (TCS)	■	■	■	■
Active Brake Limited Slip (ABLS)	■	■	■	■
Blind Spot Warning <sup>5</sup>		■	■	■
Rear Cross Traffic Alert <sup>10</sup>		■	■	■
Rear Automatic Braking <sup>12</sup>			T	■
Intelligent Forward Collision Warning <sup>8</sup>	■	■	■	■
Automatic Emergency Braking <sup>9</sup>	■	■	■	■
Automatic Emergency Braking with Pedestrian Detection <sup>9</sup>			T	■
Intelligent Lane Intervention <sup>11</sup>			T	■
LATCH System (Lower Anchors and Tethers for Children)	■	■	■	■
Tire Pressure Monitoring System (TPMS) with individual tire pressure display and Easy-Fill Tire Alert <sup>30,31</sup>	■	■	■	■

## DIMENSIONS/CAPACITIES/MPG

Exterior Dimensions – Inches	
Wheelbase	111.2
Overall length	192.8
Overall width/height	75.4/67.8
Track width	64.6

Interior Dimensions (front/rear) – Inches	
Head room	39.9/39.8
Head room with Power Panoramic Moonroof	38.1/37.8
Leg room	40.5/38.7
Hip room	55.4/55.2
Shoulder (room front/rear)	59.5/58.8
Step-in height	15.8/15.1

Capacities	
Seating capacity	5
Interior passenger volume (front/rear)	
— Without moonroof	55.7/52.4
— With moonroof	53.1/49.7
Cargo volume with rear seat up (cu. ft.)	
— Without moonroof/with moonroof	32.1/31.1
Cargo volume with rear seat down (cu. ft.)	
— Without moonroof/with moonroof	67.0/65.0
Fuel tank (gals.)	19.0

2019 EPA Fuel Economy Estimates <sup>32</sup>		
City/Highway/Combined MPG	FWD	AWD
V6	20/28/23	20/28/23

## NISSAN ROADSIDE ASSISTANCE

Your peace of mind is on us. For 36 months or 36,000 miles, whichever comes first, your new Nissan vehicle is covered for the following:<sup>33</sup>

- Flat-tire changes
- Trip Interruption benefits
- Vehicle lockouts
- Emergency fuel delivery
- Jump starts

Follow Nissan on:



visit [NissanUSA.com/murano](https://www.nissanusa.com/murano)

PRINTED IN USA